

Dear Collector

I don't know about you but I am now having great difficulty finding enough really good items to sell, either for exclusive offers or for the catalogues. It is a good job that I have a stock of excellence to call on otherwise these catalogues would slow, reduce in size, or quality, or both. Rest assured that I have put aside many new items, and our quality stock from Highfield has still to see the light of day after being stored for more than two years.

One major improvement that is ongoing is the new home for the business. After waiting some considerable time for planning permission for the changes and new buildings, everything was granted apart from making the stable block into a one bedroom apartment, which was intended to be a granny flat for Elizabeth's mother. Rather than fight the council we decided to have it as an outbuilding instead. After propping the roof up, the already collapsing front was demolished and rebuilt. The floor was dug up yielding hundreds of old bricks from under the later concrete covering. We relaid that after putting in a waterproof membrane, sand, thick insulation then more concrete. As with all work I have had to undertake, first at Station House, then Highfield, now Etherington House, it could not turn out to be straight forward could it? Oh no! The two stables had been built at different times and the courses of bricks did not align. When we pulled the planking ceiling down we found that there was no alignment of the roof timber supports either. Nothing is impossible to put right, but such problems are difficult and time consuming. When the roof beams and supports were exposed some of them proved to be full of Woodworm or rotten, others were not properly connected, so major timber repairs, replacement and treatment was required. That answered our curiosity about the sagging roof! Of course such work can't be carried out without stripping the tiles off which was duly carried out. The timber work complete, new roof widows installed, it was time to fit the waterproof membrane and retile. After extensive roofing experience at Highfield such a comparatively small roofing job was a doddle for me. And that is it thus far. Electricity, heating, windows, doors, wall insulation, plastering, decorating and fitting out are all to come. If we had been allowed to level the whole site it may well have been easier, no matching up, no headaches about everything on the property being imperial and all new bricks, tiles etc. being metric. Happy days! **DT**

Front Cover

Carlton	Scotsman golfer on green backed dish, complete with original club "L" missing from the stand up word "Golf" insc. "The game Scotchmen knock the L out of" Sheffield	495
---------	---------------------------------------------------------------------------------------------------------------------------------------------------------------------	-----

Rear Cover

Grimwades	Plate, 256mm dia. "debris"/"Coiffure in the trenches"	125
Grimwades	Wall plate, 252mm dia., Aeroplanes and shells border/ "I likes me drop o' rum"	125

W.H.GOSS

Early and Late Ware



- | | | |
|---|------------------------------------------------------------------------------------------|-------|
| 1 | Parian bust of crying child, 225mm | £ 425 |
| 2 | Parian bust of Lady Godiva on socle/octagonal plinth, 210mm
(three chips to base rim) | 250 |



- | | | |
|------|--------------------------------------------------------------------------------|-----------|
| 3, 4 | | 5 |
| 3 | Parian bust of Bright, 168mm
(small firing flaw to rear corner of shoulder) | 135 |
| 4 | Parian bust of Byron, 174mm | 225 |
| 5 | Parian bust of Salisbury, 170mm | 225 |
| 6 | Cenotaph, 150mm | London 45 |
| 7 | Annette, 142mm, purple dress | 225 |



	6	7	8	9	£
8	Edith, blue and pink dress				195
9	Lady Rose, purple and blue dress				225

Goss Animals



	10	11	12	13	14	£
10	Bear and Ragged staff				Warwick	195
11	Fully coloured, unglazed, Bear and Ragged staff					450
12	Cheshire cat				Chester	135
13	Lucerne lion, legend to rear					180
14	Shetland pony				Earl of Caithness, John O' Groats	195

Goss Cottages



	15	16	17	18	£
15	Prince Llewellyn's house, Beddgelert				175

16	Cat and Fiddle in Buxton	195
17	St Nicholas Chapel, Ilfracombe	160
18	Old Maids Cottage, Lee	125



	19	20	21	22	£
19	Manx cottage, glazed				75
20	Manx cottage night light				125
21	Charles Dickens' house, Rochester				140
22	First and Last Post Office, Sennen				140

Matching Crests on Goss



	23	24	26	27	28	£
23	Colchester Roman lamp					
24	Dart Sack bottle, large					
25	Hastings kettle					
26	Steyning sea urchin					
27	Whitby pillion stone					
28	York Roman vessel					

International League of Goss Collectors	220
Dartmouth (king and lions in boat)	45
Hastings/St Leonards	30
Steyning	95
Whitby	55
City of York	38

Interesting Decorations on Goss



29	Miniature tea service, comprising; oval tray, four cups and saucers, tea pot and lid, jug and bowl	
	Forget-me Nots	175
30	Louth ewer, small	Broadway Tower, sepia 75
31	Fluted jug with blue angular handle, 84mm	Burnham, black 110



	31	33	35	37	£
32	Penmaenmawr urn, small		Carnarvon I/Carnarvon Castle		55
33	Taper jug, 84mm		Okehampton		110



	30	32	34	38	39	40	41	£
34	Christchurch urn		Penmaenmawr, Dwygyfylchi Village, sepia					95
35	Taper mug with angular handle, 75mm		Windermere					110
36	Round teapot stand, 100mm dia.		Ely Cathedral, black					85
37	Taper mug with everted rim, 74mm		Windsor Castle from Eton, sepia					45
38	Ancient tyg		The Black Watch					140
39	Worcester jug, small		Royal Navy					120
40	Atwick vase		The Worcestershire Regiment					95
41	Portland vase		Masonic All Seeing Eye within the G					350



	42	43	44	45	46	47
42	Two handled cup, 38mm		School House, Rugby/Floreat Rugbaea			36
43	Bagware sugar bowl, 88mm dia.		Red and gold butterflies and grasses			115
44	Swiss vinegar bottle		Manor of Acle			36
45	Devon oak pitcher, small		St Paul's School			36
46	Seaford urn		Trinity College, Cambridge			30
47	Cylindrical salve pot and lid		Cowper			36
48	Crinkle top vase, blue rope to base, three Butterfly handles		Ancient See of Coventry, Coventry and Warwickshire			95
49	Wall plate, 200mm dia.		Seven Flags of the Allies/Bolton Abbey			75



48

49



36

50

51

52

£

50 Taper jug, 84mm

51 Taper jug, 84mm

52 Unnamed Cambridge jug, 82mm

Manx Rooster

Manx Cat

Manor of St Just

55

45

40

53 Four spherical vases centre piece

145mm

William the Conqueror/

St George/ King Harold/

King Henry I/ King Henry III/

Queen Anne/King William Rufus/

Margate/Kent

125



53

Goss Named Models



	56	68	70	72	74	75	£
54	Aberdeen bronze pot, small				Ardrishaig		26
55	Betws-y-Coed kettle, small			Downham Market or Ramsgate			30
56	Betws-y-Coed kettle, large				Margate/Kent		45
57	British tank				Northampton		95
58	Boston ewer				Redruth		26
59	Glastonbury salt cellar				Lowestoft		30
60	Hawes urn				Wimbledon		32
61	Hitchin posset cup				Ashby-de-la-Zouch		26
62	Irish Bronze pot, small				Saffron Walden		24
63	Leek urn				Stourbridge		30
64	Maltese funereal urn				Forres		24



	57	65	60	76	£
65	Mons Meg			Blackburn	45
66	Norwich Urn, small			Dorchester	24
67	Romsey bushel			Malton	36
68	Saltwood ewer			Wimborne	28
69	Swindon vase, small			Barnet or Willesden	24
70	Swiss milk pot			Lowestoft	36
71	Truro Glen Dorgal			Coleshill	26
72	Teignmouth Lighthouse			Totnes	38
73	Tresvannack urn			Land's End	26
74	Waterlooville bottle			Maidstone	32
75	Westminster Abbey coronation chair			Lowestoft	36
76	Witches' cauldron insc. "Double double...."		Painswick Bow-wow crest		36

MILITARY CHINA

Vehicles



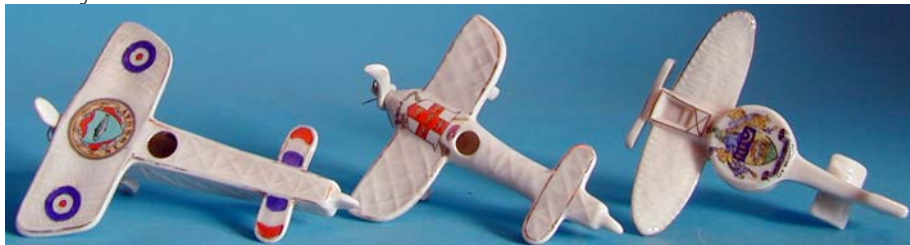
- | | | | | |
|--------|---------------|------------------------------------------------------------------------|----------------|-----|
| 77, 78 | | | | |
| 77 | Savoy | Tank, HMS Donner Blitzten, 132mm long
(tiny chip to end of one gun) | Redcar | 35 |
| 78 | Savoy | Slim tank with wheels, HMS Donner Blitzten, 138mm long
male guns | Sunderland | 65 |
| 79 | U/m (Grafton) | Whippet tank (firing flaw to top of tower) | Clacton-on-Sea | 125 |



- | | | | | |
|----|----------------|-----------------------------------------------------------------------------|-----------|------|
| 80 | Dainty | Red Cross Van, 90mm long | Lowestoft | £ 48 |
| 81 | U/m (Arcadian) | Giant Red Cross van, 160mm long
British Empire Exhibition, Wembley, 1924 | | 995 |



- | | | | | |
|----|-------------|---------------|---------|------|
| 82 | Shelley 330 | Red Cross Van | Romford | £ 65 |
|----|-------------|---------------|---------|------|



85 86 87

83	Carlton	Rolls-Royce armoured car	Tank Corps	395
84	Savoy	Talbot armoured car	Eastbourne	195
85	Willow	Bleriot monoplane with spinning propeller, coloured roundels and tail flashes	Newquay	140
86	Carlton	Monoplane with spinning propeller	York	125
87	Arcadian	Monoplane with central fuselage disc and two bladed fixed propeller	New Brighton	135



	88		89		90	£
88	Carlton	Unnamed Submarine E9		Kingstown	75	
89	Carlton	Battleship HMS Princess Royal		Rugby	195	
90	Arcadian	Large HMS Queen Elizabeth, 165mm long		Swanage	55	

Guns and Munitions



	91		92		93		94		95	£
91	Carlton	British machine gun with filled in grip		Rugby	65					
92	Arcadian	Trench mortar on sledge		Kildare	55					
93	Carlton	Small field gun, French 75		Portsmouth	45					
94	Willow	Field gun with screen		Sheffield	45					
95	Grafton	Trench mortar		Sandgate	36					



96 97 98 99 100 101 102

96	Arcadian	Mills hand grenade	Hull	45
97	Arcadian	Shell, 70mm	Wisbech	26
98	Arcadian	Shell, 90mm insc. "Jack Johnson"	Whitchurch	26
99	Arcadian	Pearl lustre shell, 95mm	Black Cat cartoon, Wembley	36
100	Aynsley	Shell, 107mm	Royal Scots Fusiliers, 21 st Foot	135
101	Aynsley	Shell, 107mm	4 th Dragoon Guards	135

Equipment



	103	104	105	106	107	108
102	Aynsley	Bell tent	2 nd Dragoons (Royal Scots Greys)			125
103	U/m (Willow)	Spiked ceremonial helmet			Llanelly	36
104	U/m (Savoy)	Balmoral bonnet		Hartlepool/War inscription		95
105	Savoy	Glengarry		Antwerp/War inscription		95
106	Alexandra	Bugle		Black Cat cartoon, Lyndhurst		48
107	U/m (Grafton)	Water bottle			Calais	38
108	Grafton	Putteed boot			Canvey-on-Sea	30

Figures, Busts and Memorials



	109	110	111	112	£
109	Arcadian	Cossack on horseback (small chip to horse's rear and end of rifle missing)	Faversham Borough and Priory		95

110	Carlton	Old Bill	Sheffield	295
111	Arcadian	Bust of Albert King of the Belgians on glazed square plinth	Flags and Shields of the Allies	125
112	Arcadian	Bust of Kitchener on glazed square plinth	London	75



	113	114	115	116	£
113	Swan	Tommy on sentry duty	Crowborough	140	
114	Carlton	Shrapnel Villa, (45mm firing crack in base)	Hull	65	
115	Arcadian	Tommy and his machine gun	Torquay	75	
116	U/m (English)	Slipware fully coloured character jug of Kitchener, 130mm (some wear to hair colour)		75	



	117	118	119	120	£
117	Arcadian	Cenotaph, 142mm	Black cat cartoon, Wembley	38	
118	Willow	Great Yarmouth War Memorial, 170mm	Great Yarmouth	45	
119	Willow	Scarborough Lighthouse and Coastguard Station with shell holes and war inscription	Scarborough	325	



121	Spode	Bust of Churchill, by Nemon, 175mm	122	£
121	Spode	Bust of Churchill, by Nemon, 175mm	250	
122	Royal Doulton Tankard, 140mm	Winston Churchill/Speech	65	

War Time Decorations



123	124	125	126	127	128	129	£
123 Savoy	Lachrymatory			Antwerpen/War Inscription			36
124 Savoy	Bottle			Australia/War Inscription			65
125 Savoy	Pestle shape vase			Brussels/War Inscription			36
126 Savoy	Cooking pot			Bucharest/War Inscription			65
127 Savoy	Two handled vase			Nieuport/War Inscription			36
128 Savoy	Barrel			Soissons/War Inscription			36
129 Savoy	Bottle	The Worcestershire Regiment/War Inscription					125
130 Savoy	Partly coloured Fireplace, 92mm						
	insc. "Keep the home fires burning..."					Ripon	45



- | | | | | | |
|-----|-----------|------------------------------------------------------------------------------|-----|------------|----|
| | 130 | 131 | 132 | 133 | £ |
| 131 | Carlton | Flat backed partly coloured fireplace
insc. "Keep the home fires burning" | | Sheffield | 45 |
| 132 | Waterfall | Pan on fireplace, insc. "Keep the home fires burning.." | | Hull | 36 |
| 133 | Arcadian | Large fireplace, 115mm
insc. "We've kept the home fires burning" | | Darlington | 45 |



- | | | | | |
|-----|-----------|--------------------------------------------------------------------------------------------------------------------------------------------------------------------------|---------|-----|
| 134 | Grimwades | Two piece cheese dish, "debris" borders,
"Well if you knows of a better 'ole.../What time do they feed the Sea
Lions?/When the 'ell is it going to be strawberry"/ | Margate | 195 |
|-----|-----------|--------------------------------------------------------------------------------------------------------------------------------------------------------------------------|---------|-----|



- | | | | |
|-----|-----------|-------------------------------------------------------------------------------------------------|-----|
| 135 | Grimwades | Jug, 125mm
Bairnsfather
Cartoon
"Dear - ,At
Present we are
staying at a
farm" | 150 |
|-----|-----------|-------------------------------------------------------------------------------------------------|-----|



	136	137	138	£
136	Collingwood	Cup and saucer		
		insc. "Victory, Peace, Justice, Freedom 11.11.1918"	55	
137	Chelson	Slipware Beaker, 105mm		
		Profile of HMS Lion/Victory, 1919	55	
138	Chelson	Cup and saucer	Britannia and Flags, Peace, 1919	36

ANIMALS

Cats and Dogs



	139	140	141	142	143	144
139	Carlton	Black cat sitting on powder blue lustre armchair				
			Black Cat cartoon, Folkestone	55		
140	Arcadian	Black cat on bicycle	Hereford	250		
141	Arcadian	Black cat on scooter	Tewkesbury	225		
142	Willow	Black cat by thistle flower vase	Fair Maid's House, Perth	250		
143	Arcadian	Black cat on jug	Weymouth and Melcombe Regis	65		
144	Arcadian	Black cat holding umbrella	British Empire Ex., 1925	125		
145	Hamilton	Sitting large puppy, 86mm	Saltburn-by-the-Sea	30		
146	Florentine	Two King Charles Spaniels in top hats	Newcastle-on-Tyne	32		
147	U/m (English)	Walking Pointer	Black cat cartoon, New Brighton	45		
148	Carlton	Large sitting Boxer, 150mm				
		insc. "My word, if you're not off"	Gosforth	38		



145

146

147

148

Birds



149

150

151

152

153

154

£

149 Carlton

Swan

Maltby

24

150 W

Kingfisher jug

Gravesend

28

151 Florentine

Parrot, 92mm

Ludlow

26

152 Milton

Canary on plinth

Jersey

32

153 Willow

Fully coloured Canary on plinth

Norwich

38

154 W

Swan posy holder

Gravesend

28

Pigs



155

157

161

163

166

168

155 Willow

Standing pig

Brightlingsea or Southampton

30

156 Devon

As above

Ashburton

30

157 Arcadian

Kneeling piglet

Dorking or Eton or Fowey or Lyndhurst

30

158 W & Co

As above

Hunstanton, St Edmunds

30

159 Swan

As above

Kenilworth Priory

30

160 Florentine

As above

Chepstow or Herne Bay

30

161 Caledonia

Kneeling pig

Campbeltown or Stirling

36

162	Savoy	As above	Enfield or Plymouth	36
163	Victoria	Standing pig	Fleetwood	30
164	Florentine	As above	Portrush	30
165	Cylone	As above	Hackney	30
166	Anglo Heraldic	Medium sized standing pig	Dorking	30
167	Victoria	As above	Wrexham	30
168	Arcadian	Small standing pig	Beer	30
169	Carmen	As above	Rugby School	36
170	Swan	As above	Faversham Arms, Helmsley	30
171	U/m (British)	As above	Banbury or Wrexham	30
172	Carlton	As above	Fakenham-Lancaster	30

Other Animals



173	174	175	176	177
173	U/m (English)	Seal with ball on nose	Christ's Hospital	32
174	Arcadian	Frog with head thrown back and mouth open	Woburn	32
175	Arcadian	Mouse holding acorn	Gloucester, Modern	65
176	Carlton	Bull, insc. "King of the herd"	Maidstone	85
177	Savoy	Elephant with trunk raised with tusks	Brighton	75
178	Willow	Mouse poking head out of a sack of meal, insc. "May the moose ne'er leave....."	Back cat cartoon, Ilfracombe	38



179	180	181	182	£
179	Grafton	Bear and Ragged staff	Chesterfield	45
180	Willow	Donkey wearing saddle and bridle	Torquay	65
181	Arcadian	Walking Donkey	Winchester	65
182	U/m (Shelley)	Standing Donkey	Southsea	55
183	Grafton	Straight fish	Filey	26

BUILDINGS AND MONUMENTS



	184	185	186	187	£
184	U/m (Saxony)	Old Market Cross, St David's		Margate	55
185	Arcadian	Morpeth Castle		Morpeth	65
186	Arcadian	Gloucester Cathedral		Gloucester	48
187	Botolph	Marble Arch, 77mm		London	24



	187	188	189	£
187	Foreign	Fully coloured Dutch Cottage, Canvey on Sea		
		Salt and Pepper pot		30
188	Willow	Fully coloured Leicester Hospital, Warwick		225
189	U/m (English)	Fully coloured Couch's House, Polperro	Polperro	250



	191	192	193	194	£
191	U/m (Leadbeater)	Fully coloured Harvard House, Stratford-on-Avon			
		(top of chimney missing)			125

192	Ryecroft	Grimsby Hydraulic Tower, 140mm	Horden	28
193	Rita	Rock of Ages, 135mm	Cheddar	30
194	U/m (English)	West front York Cathedral, 115mm	York	36

FIGURES AND BUSTS



195	Tuscan	Fully Coloured Lady Grace	196, 197
195	U/m (German)	Black Minstrel playing tambourine, 220mm	135
			75



198 199 200 201 202

197	U/m (German)	Black minstrel playing clarinet, 220mm	75
198	U/m (Germany)	Comical black man, "Mr Adam", wearing fig leaves on braces, (very slight fading to black)	125
199	Germany	4342, Comical black girl riding ostrich	125
200	U/m (Germany)	Comical black man wearing underwear, collar and tiny top hat holding umbrella	125
201	Regis	Partly coloured child in sailor outfit standing on plinth insc. "Ship A'hoy", 155mm	Weymouth 75
202	U/m (Savoy)	Little Bo Peep on plinth, 170mm, (no crook)	Brighton 65



	203	204	205	206	207	208	£
203	Arcadian	Black boy being chased up a tree by a Crocodile	Windsor	180			
204	Carlton	Black girl in hip bath, insc. "I'se making ink"	Douglas	125			
205	Germany	1874, Fully coloured black child chef, pepper pot, 82mm		36			
206	Germany	Black child wearing top hat, insc. "Morning exercise"	Whitefish, Montana	65			
207	U/m (Germany)	Hassall style black child boxer with moveable head (paint wearing, head repaired)		15			
208	Foreign	7057 black child on toilet holding door (wear to colours) insc. "Shut the door"		25			

TRANSPORT



209	Carlton	Locomotive	Castleford	175	210, 211
210	Willow	A truck of Iron Ore	Redcar	95	
211	Willow	A truck of Coal	Coalville	65	
212	Arcadian	Charabanc	Portsmouth	45	
213	U/m (Saxony)	Charabanc	Weymouth	38	
214	Shelley	352, Charabanc, insc. "The Monarch"	Eastbourne	65	



212

213

214



215

216

217

£

215	Willow	Double deck tram, "Life on the ocean wave"	Cleethorpes	175
216	Arcadian	Double deck bus	London	250
217	Carlton	Motor Cycle and side car with rider	Llandilo	95
218	Willow	Lifeboat	Wells-next-the-Sea	36

Pre-Crested China Souvenir ware



219

220

221

222

£

219	U/m(English)	Mug, 77mm, Circa 1840	Child picking flowers	48
220	F F Bodley & Co	Mug, 80mm	Purple view of Glass House Mill School	
			Jno & Geo Metcalfe, 1861	55
221	U/m(English)	China Mug, 68mm, Made for Abel, Cromer	Black view of Cromer	48
222	U/m9English)	Pale Green mug, 82mm	Ochre portrait of Robert	
			Arthur Talbot Cecil, 3 rd Marquess of Salisbury	
			of Hatfield Hall, Hertfordshire	55
223	U/m	Mauchlineware rectangular box, 138mm long	Transfer view, The Fish Market, Lowestoft	36



